

## 36pcs 6 in 1 LED Moving Head zoom

### User Manual



This manual contains important information.  
Please read before operating fixture.



## 1 SECURITY TIPS

**WARNING!!! To reduce the risk of fire, electric shock, or injury to persons, follow these important safety instructions:**

- non-professionals, not to disassemble the light arbitrarily and lighting accessories inside.
- rated voltage range: AC110V-120V/60Hz or AC200V-240V / 50HZ (to be selected).
- not beam irradiate the flammable materials, flammable materials and the lamp should be maintained at least 1M over the distance.
- lamps used in ambient temperature: -15 °C -40 °C , the highest temperature of the surface of the lamp: 60 °C.
- to keep away from the liquid substance and humid environment.
- before using the lights must ensure the good grounding, can not install charging and remove any parts.
- the installation of lamps, must be fixed screw fasteners with additional security cable and regular inspection.
- lamps consecutive working hours is not recommended more than 10 hours.
- should stop using the lights in time when happens unusual conditions during the process
- lamp parts of the rotation, external accessories and paste parts should be regular inspected, such as the emergence of loose and rock, should be reinforced in a timely manner to prevent the accident.
- lamps adopt strong winds to refrigerate, it is easy to accumulate the dust, so you have to clean it weekly especially the cooling air opening, otherwise the dust will plug leading to poor light

## 2 TECHNOLOGY REFERENCE

- Input Voltage: AC90-240V 50-60Hz
- Power: 540W
- LED : 36\*15W 6-IN-1 LEDs (R, G, B, W,A , UV)
- Control Mode : DMX512, master-slave, sound activated, Auto
- Channel: 18DMX channels
- Zoom angle : 10---60 degree
- Pan Movement: 540° (16bits)
- Tilt Movement: 270°(16bit)
- IP rate : IP20
- Big LCD touch screen
- 16.7 millions color mixing
- Strobe effect with 1-25 flashes per second and pulse effect
- Built-in programs with macro effects
- 3-Pin XLR DMX input/output
- Dimensions: 332(D)\*235(W)\*445(H)mm
- Packing Dimensions:360(D)\*390(W)\*490(H)mm
- Net Weight: 10kg



## 1 SECURITY TIPS

**WARNING!!! To reduce the risk of fire, electric shock, or injury to persons, follow these important safety instructions:**

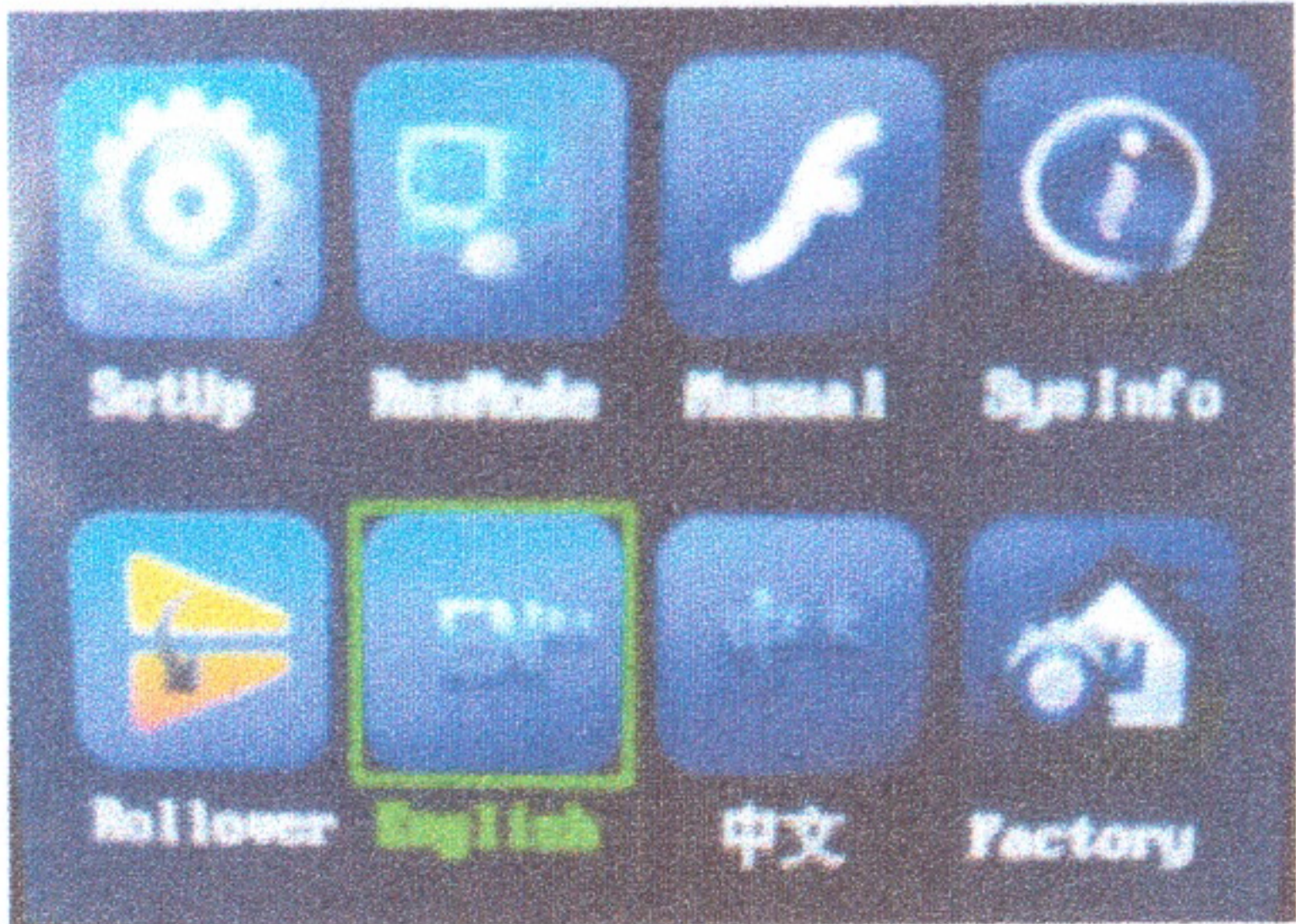
- non-professionals, not to disassemble the light arbitrarily and lighting accessories inside.
- rated voltage range: AC110V-120V/60Hz or AC200V-240V / 50HZ (to be selected).
- not beam irradiate the flammable materials, flammable materials and the lamp should be maintained at least 1M over the distance.
- lamps used in ambient temperature: -15 °C -40 °C , the highest temperature of the surface of the lamp: 60 °C.
- to keep away from the liquid substance and humid environment.
- before using the lights must ensure the good grounding, can not install charging and remove any parts.
- the installation of lamps, must be fixed screw fasteners with additional security cable and regular inspection.
- lamps consecutive working hours is not recommended more than 10 hours.
- should stop using the lights in time when happens unusual conditions during the process
- lamp parts of the rotation, external accessories and paste parts should be regular inspected, such as the emergence of loose and rock, should be reinforced in a timely manner to prevent the accident.
- lamps adopt strong winds to refrigerate, it is easy to accumulate the dust, so you have to clean it weekly especially the cooling air opening, otherwise the dust will plug leading to poor light

## 2 TECHNOLOGY REFERENCE

- Input Voltage: AC90-240V 50-60Hz
- Power: 540W
- LED : 36\*15W 6-IN-1 LEDs (R, G, B, W,A , UV)
- Control Mode : DMX512, master-slave, sound activated, Auto
- Channel: 18DMX channels
- Zoom angle : 10---60 degree
- Pan Movement: 540° (16bits)
- Tilt Movement: 270°(16bit)
- IP rate : IP20
- Big LCD touch screen
- 16.7 millions color mixing
- Strobe effect with 1-25 flashes per second and pulse effect
- Built-in programs with macro effects
- 3-Pin XLR DMX input/output
- Dimensions: 332(D)\*235(W)\*445(H)mm
- Packing Dimensions:360(D)\*390(W)\*490(H)mm
- Net Weight: 10kg



### 3 Board Instruction

No	English display	description
1	DMX512 ADDRESS 001 SHOW	
2	Main Interface	

#### 3.1 SetUp

Item	description	
SetUP	DMX Address	001-512
	FraderDelay	ON/OFF
	CodeWheel	ON/OFF
	NoDMXSingle	KEEP/CLEAR
	ScreenSaver	ON/ turn off light in 30s OFF light on all the time
	PanReverse	ON/OFF
	TiltReverse	ON/OFF
	LoadDefault	ON/OFF
	Return	

#### 3.2 RunMode

	DMX18	ON/OFF
	SoundMode	ON/OFF
	AutoMode1	ON/OFF
	AutoMode 2	ON/OFF
	AutoMode 3	ON/OFF
	AutoMode 4	ON/OFF
	Return	

#### 3.3 Manual

Item	Description	
Reset	YES/NO	
Pan	0-255	Adjust Pan motor
Tilt	0-255	Adjust Tilt motor
Focus	0-255	Adjust focus motor
First Lamp	0-255	RGBWA dark--light
Second Lamp	0-255	RGBWA dark--light
Third Lamp	0-255	RGBWA dark--light
Fouth Lamp	0-255	RGBWA dark--light
Return		

#### 3.4 SysInfo

Item	Description
SoftVer	V1.00
RunTime	Machine working time
OnTime	Machine working time ,one time
Temperature	Inside
FanStatus	



Return	
--------	--

3.5 Rollover

The screen rollover 180degrees

3.6 English

Language : English

3.7 中文

Language : English

3.6 Factory

Item	Description	
PanOffest	0-25 5	Pan Motor adjust
TiltOffest	0-25 5	Tilt Motor adjust
FocusOffext	0-25 5	FocusMotor adjust
Lamp	0-25 5	RGBWA+UV dark--light
TempSwitchSet	ON/OFF	
TemperatureSet	0-100	
LOGO Set	LOGO1 LOGO2 LOGO3	Display : DMX address Display : LOGO empty
Return		

4 DMX CHANNEL SHEET

4.2 18CH

No	Function	description
CH 1	Pan	(0-255) Upside adjustment corotation, downside adjustment inversion
CH 2	Tilt	(0-255) Upside adjustment corotation, downside adjustment inversion
CH 3	Speed Pan and Tilt	(0—255) .Fast--Slow
CH4	total dimmer	(0—255) R.G.B.W.A total dimmer, linear dimmer, from dark to brightness.
CH5	R dimmer	R dimmer, (0—255) linear dimmer, from dark to brightness
CH6	G dimmer	G dimmer, (0—255) linear dimmer, from dark to brightness
CH7	B dimmer	B dimmer, (0—255) linear dimmer, from dark to brightness
CH8	W dimmer	W dimmer, (0—255) linear dimmer, from dark to brightness
CH9	A dimmer	A dimmer, (0—255) linear dimmer, from dark to brightness
CH10	UV dimmer	UV dimmer, (0—255) linear dimmer, from dark to brightness
CH11	total strobe	(0-10) No function (11—255) , from slow to fast.



CH12	Focus	(0-255) Focus from 0 to max continuously changing
CH13	Color selection	(0-10) No function (11-210) ,color selection (211-225),jump change (226-240) gradual change (241-255) color pulse
CH14	Color change speed	(0-255) from slow to fast
CH15	Pan fine tuning	X 16BIT (0-255) .
CH16	Tilt fine tuning	Y 16BIT (0-255) .
CH17	Rest	(0-254) No function 255 Rest
CH18	Empty	

## 5 FIXED EQUIPMENT

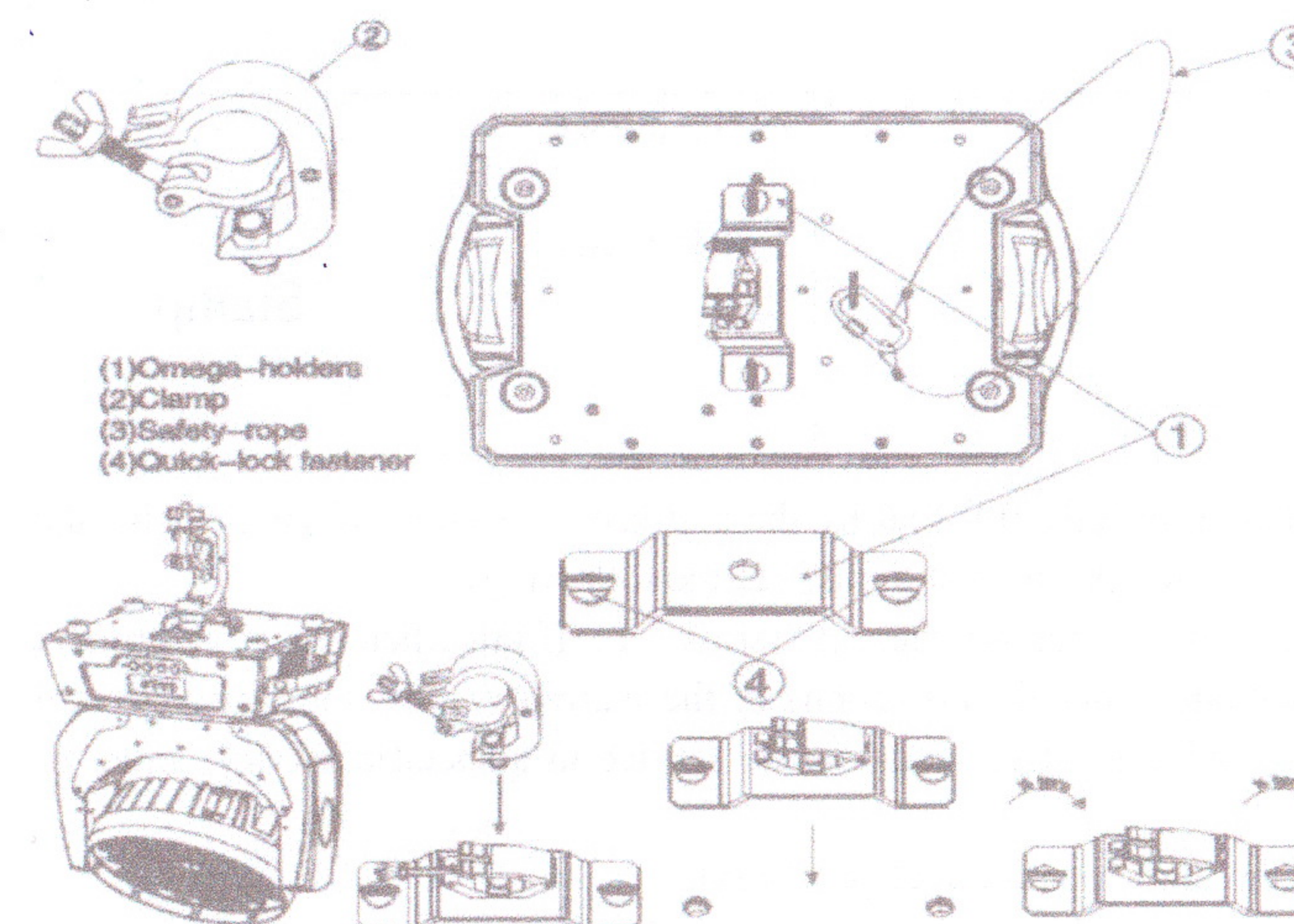
Please keep the equipment far away from the flammable objects like finishing material, etc. keep at least 0.5m distance from the flammable objects.

Warning: using two lamp clamps fix the equipment on the bottom of the lamp holder according to the instruction. to make sure the place of install the lamp is safe and suitable ,and the installation point that have chosen is safety and reliable.

The place of installing the lamp must support the 10 times weight of the lamp itself. And test the pensile place and make sure the place isn't out of the shape.

Must install the second protection when fixing the equipment like proper protective screening. The second protection is used to prevent drop off and lost of lamp and components.

Lamps can directly install the lamp holder , which is shown in the figure:



## 6 MAIN MACHINE CONNECTION

Please checking the power equipment supported.

Please put the plug of power source wire connect with the main power source .

( EU )Wire	Wire(America)	Direction of wire	General marks
Brown	Black	Live	L
Light blue	White	Neutral	N
Yellow/Green	Green	Earth	⊕





### Warranty Card

Name	Model	Production	Purchase
------	-------	------------	----------

End User
Company Name:
Add:

Sale Store
Link man:
Tel:
Stamp

Description: These must be truthfully fill, seal by the end-user and point-of-sale, or else the warranty will not work (warranty period and terms, see the following)

warranty period: one year since purchase warranty terms: 1、 If fail when using the product in normal state, you can made under the provisions of the warranty, show the warranty card and purchase bills(copy), and enjoy free maintenance service in a specific service center or the manufacturer.

2. The following will be the implementation of paid service:

- (1)Without the effective warranty card
- (2)There's blank, alter and no point-of-sale name
- (3)Fail caused by unresistance
- (4)Fail caused by transportation or unloading
- (5)Fail caused by not operate by manual
- (6)Fail caused by disassemble without unauthorized
- (7)Fail caused by using the unauthorized control system

### Note:

Based on our company continue to improve the product, the statement containing data may have changed, and will not notice the change any more. Company retains its right to change specifications related when product is improved. Thanks for your understanding.